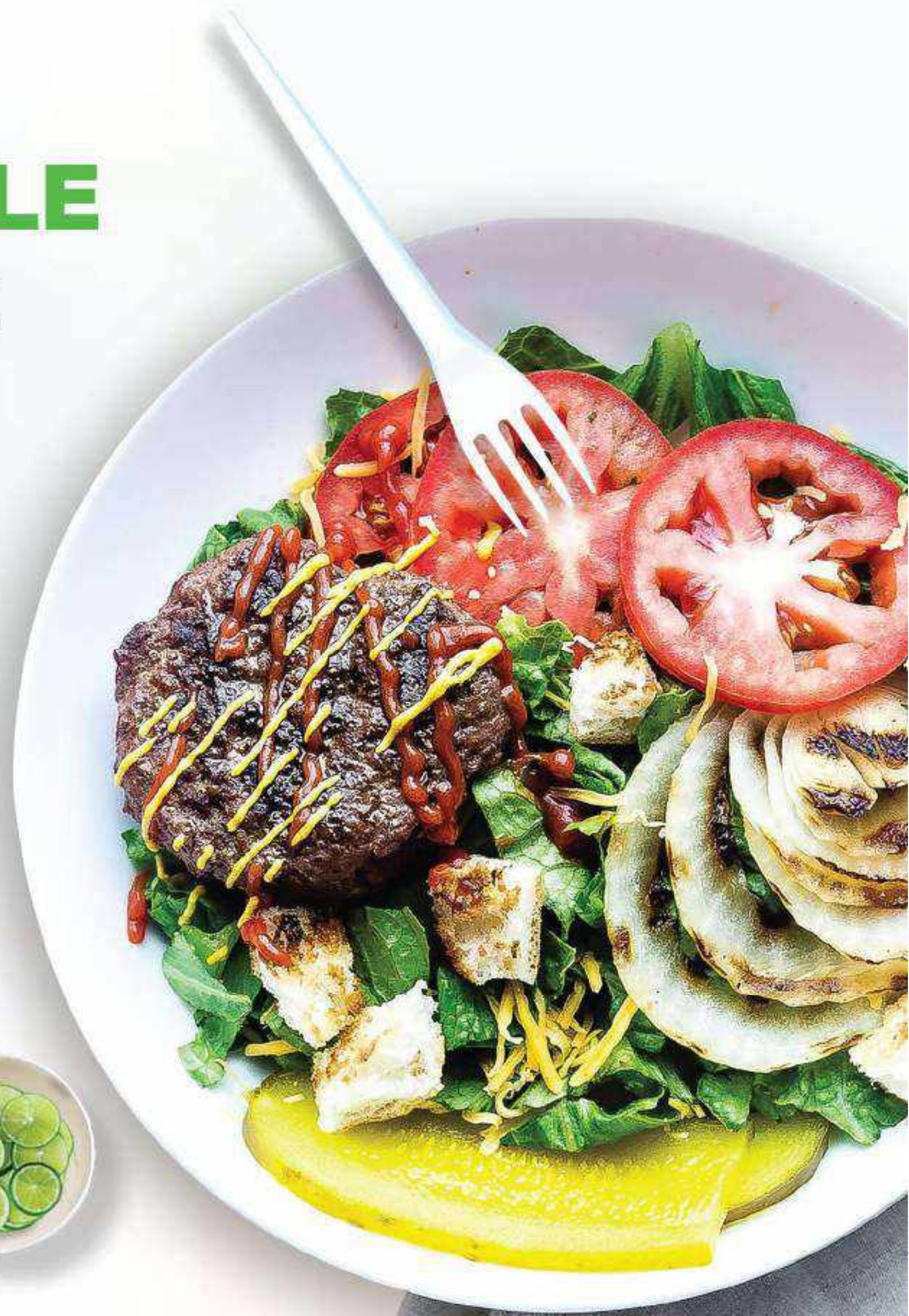




# COMPOSTABLE PRODUCTS



## ABOUT AN PHAT HOLDINGS

An Phat Holdings is one of the leading high-tech and environment- friendly plastic groups in Southeast Asia.

With 20-years of experience and many members in the plastic ecosystem, An Phat's products are sold in more than 50 markets throughout Europe, the Americas, Saudi Arabia, Janpan, Korea, Singapore, Taiwan, etc.

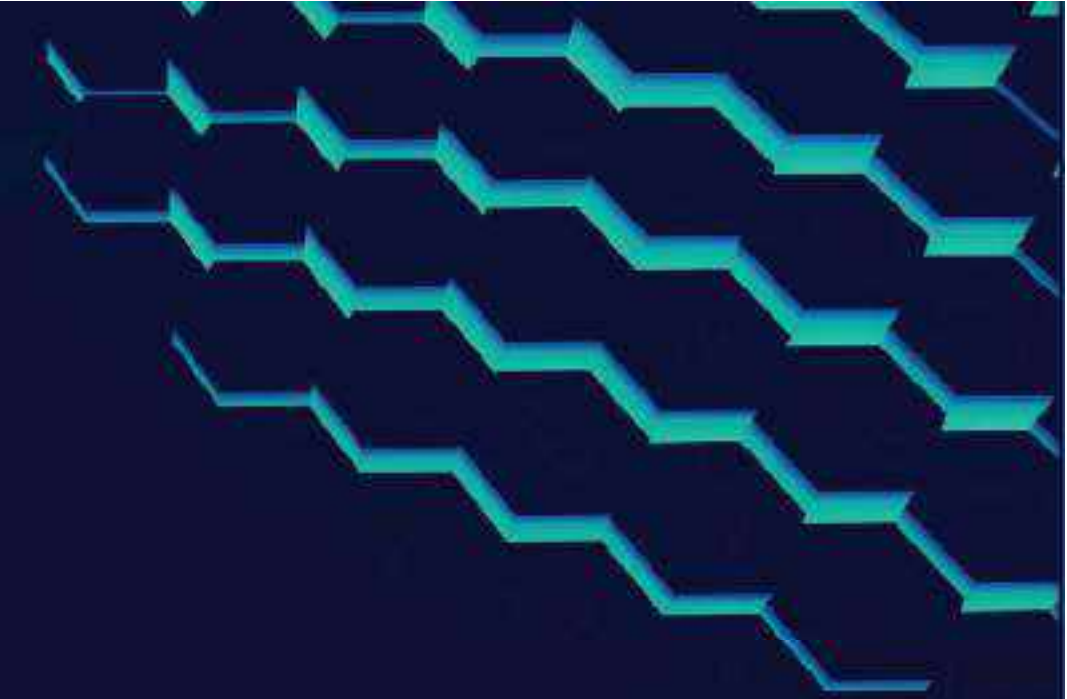
As a plastics company, An Phat anticipated the importance of investing in the development of environmentally sustainable products. An Phat's mission to reduce waste through compostable plastic products is central to its long-term environmental, sustainability and growth agenda. The compostable products AnEco is the results of our long-term investment, research, and development.

Thanks to being made from compostable materials (e.g. PLA, PBAT, PBS, etc.), AnEco products can decompose into CO<sub>2</sub>, H<sub>2</sub>O, organic humus within 6-12 months in natural burial or an industrial composting treatment. They have received compostable certification from leading international standard setting organizations, including EU, Australia, the United States, Korea, Japan.

*Help protect the green environment with AnEco!*



# COMPOSTABLE TEST



MATERIALS	0 week	2 weeks	1 month	3 months	6 months	12 months
Compostable						
Polyethylene						

# ANECO LIFECYCLE

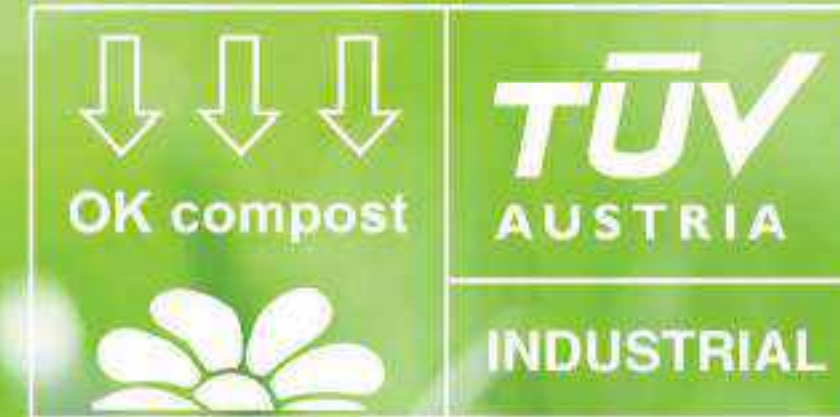
Sugar,  
**vegetable,**  
oil, starch



# INTERNATIONAL CERTIFICATIONS



# biobased %



## CONTENTS

COMPOSTABLE BAGS & GLOVES	07
COMPOSTABLE CUTLERY	09
COMPOSTABLE STRAWS	11
COMPOSTABLE PAPER CUPS	13
OTHER PRODUCTS	17









## COMPOSTABLE BAGS & GLOVES

 	<p>BPA, HDPE, LDPE free</p>
	<p>Compostable material: PBAT, PLA</p>
 	<p>Compostable within 6-12 months in an natural burial</p>
   	<p>Certified for compostability by international organisations</p>
	<p>Not suitable for containing sharp and over 100°C items</p>

**Direction:** Store in cool, dry place, away from direct sunlight



**Shopping bag**  
PLA, PBAT, starch

Size 16 x 28 cm



**Shopping bag**  
PLA, PBAT, starch

Size 20 x 35 cm



**Shopping bag**  
PLA, PBAT, starch

Size 30 x 50 cm



**Shopping bag**  
PLA, PBAT, starch

Size 20 x 38 cm



**Shopping bag**  
PLA, PBAT, starch

Size 30 x 50cm



**Food storage bag**  
PLA, PBAT, starch

Size 20 x 35 cm



**Gloves**  
PLA, PBAT, starch

Size M

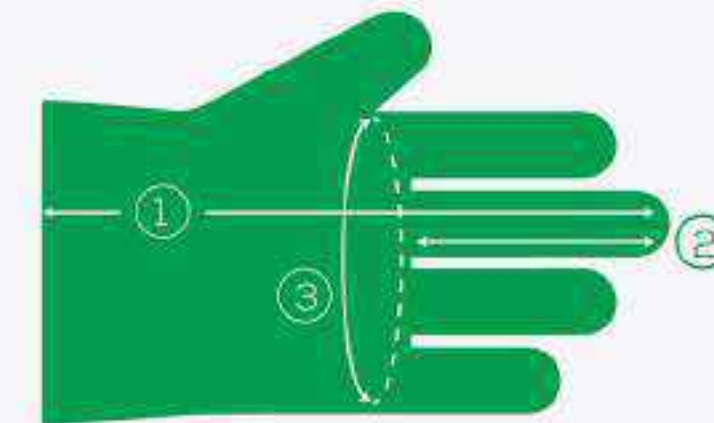
① 29 cm    ② 7.5 cm  
③ 28 cm



**Gloves**  
PLA, PBAT, starch

Size L

① 29 cm    ② 9 cm  
③ 28 cm



*\*Smaller and larger sizes are available as custom order*



**Trash bag**  
PLA, PBAT, starch

Size 31 x 62 cm



**Trash bag**  
PLA, PBAT, starch

Size 44 x 56 cm



**Trash bag**  
PLA, PBAT, starch

Size 55 x 65 cm



**Trash bag**  
PLA, PBAT, starch

Size 60 x 120 cm



**Medical waste bag**  
PLA, PBAT, starch

Size 25 + 16 x 48 cm  
34 + 18 x 60 cm  
43 + 24 x 70 cm



**Medical waste bag**  
PLA, PBAT, starch

Size 25 + 16 x 48 cm  
34 + 18 x 60 cm  
43 + 24 x 70 cm



**Medical waste bag**  
PLA, PBAT, starch

Size 25 + 16 x 48 cm  
34 + 18 x 60 cm  
43 + 24 x 70 cm



**Medical waste bag**  
PLA, PBAT, starch

Size 25 + 16 x 48 cm  
34 + 18 x 60 cm  
43 + 24 x 70 cm

*\*Smaller and larger sizes are available as custom order*

# COMPOSTABLE CUTLERY



Compostable material: PLA

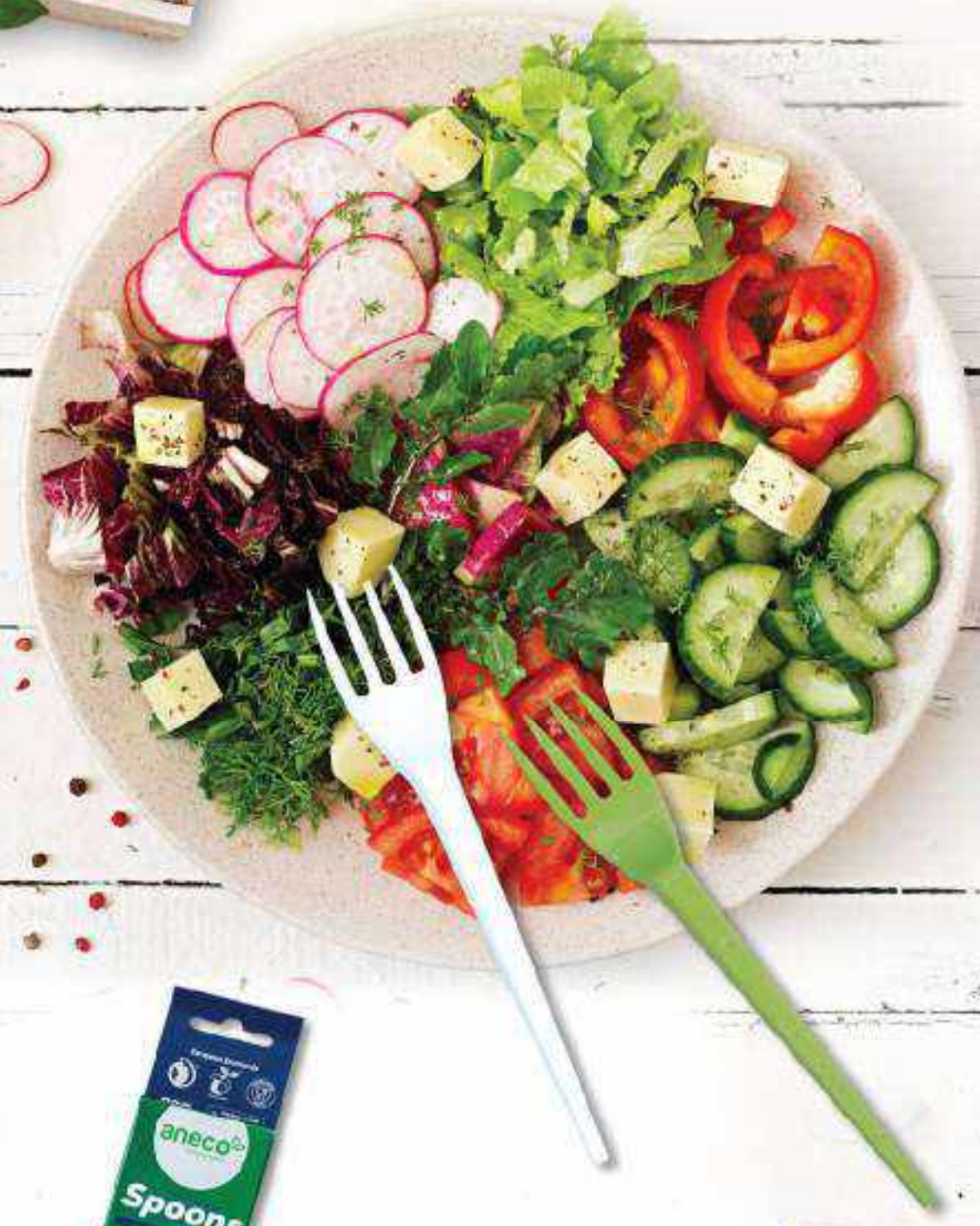


Compostable within 6-12 months in an industrial composting treatment



Certified for compostability by international organisations

**Direction:** Store in cool, dry place, away from direct sunlight





White knife (PLA)

L 15 cm | W 2,4 g



Green knife (PLA)

L 15 cm | W 2,4 g



Black knife (PLA)

L 15 cm | W 2,4 g



White spoon (PLA)

L 15 cm | W 2,7 g



Green spoon (PLA)

L 15 cm | W 2,7 g



Black spoon (PLA)

L 15 cm | W 2,7 g



White fork (PLA)

L 15 cm | W 2,6 g



Green fork (PLA)

L 15 cm | W 2,6 g



Black fork (PLA)

L 15 cm | W 2,6 g

## COMPOSTABLE STRAWS



Compostable material: PLA



Compostable within 6-12 months in an industrial composting treatment



Certified for compostability by international organisations



Resistant to temperatures up to 40°C

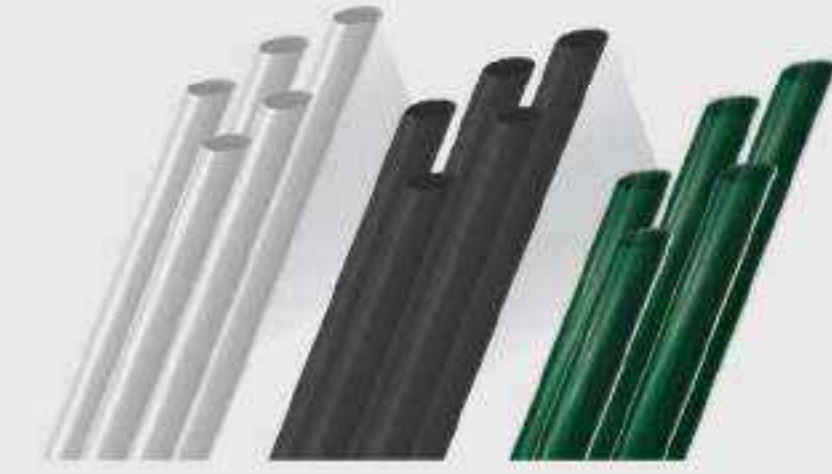
**Direction:** Store in cool, dry place, away from direct sunlight



**Straight straws**  
PLA, PBAT  
Ø 5,5 mm



**Straight straws**  
PLA, PBAT  
Ø 8 mm



**Straight straws**  
PLA, PBAT  
Ø 12 mm



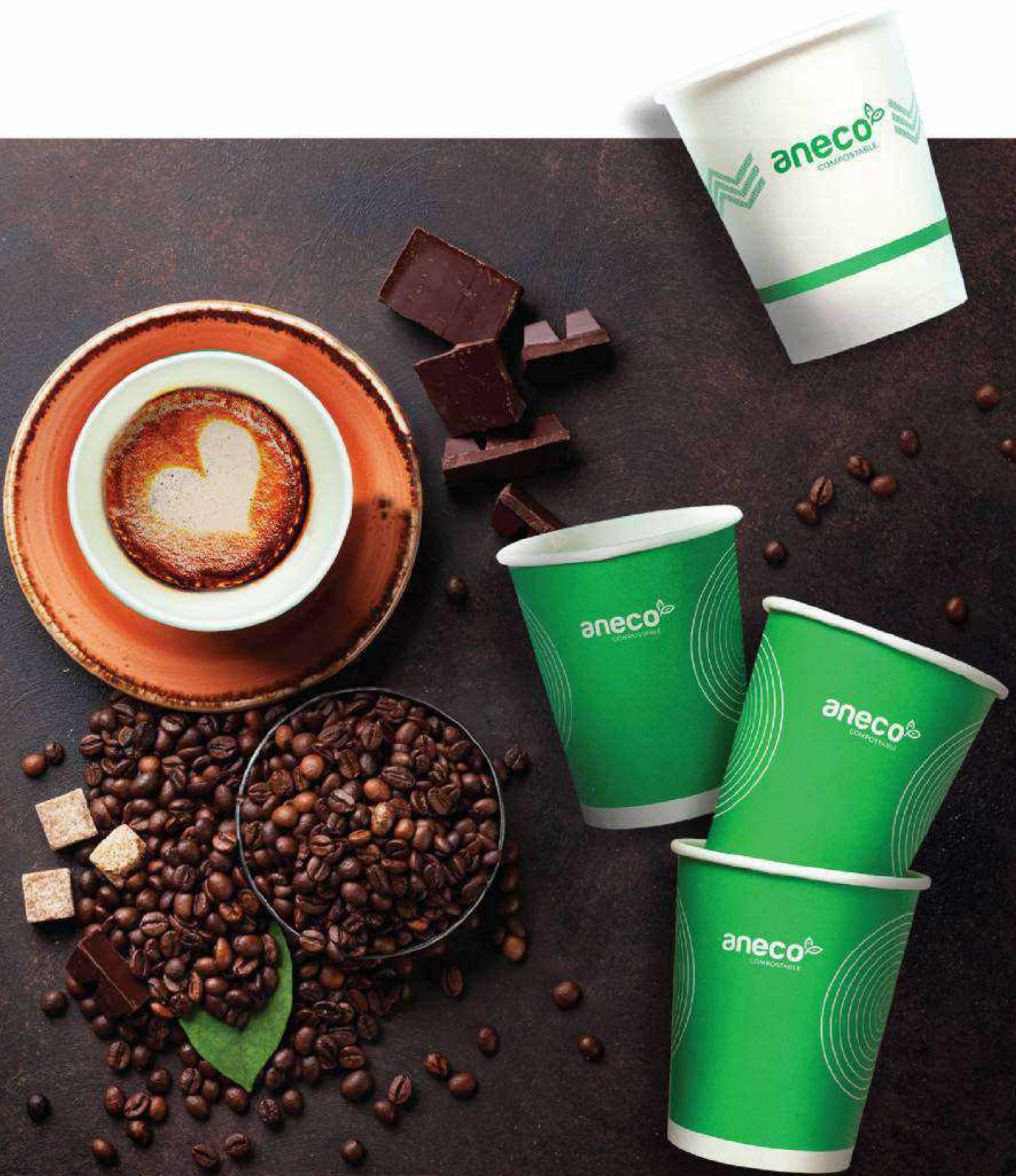
**Flexible straws**  
PLA, PBAT  
Ø 5,5 - 8 mm



**Wrapped straws**  
PLA, PBAT  
Ø 5,5 - 12 mm

*\*Smaller and larger sizes are available as custom order*

## COMPOSTABLE PAPER CUPS



Compostable material:  
PBS, paper



Compostable within 6-12  
months in an industrial  
composting treatment



Certified for compostability  
by international organisations



Not suitable for containing  
sharp and over 100°C items

Direction: Store in cool, dry place,  
away from direct sunlight





**Paper cup**  
PBS, paper  
Size 4 oz



**Paper cup**  
PBS, paper  
Size 8 oz



**Paper cup**  
PBS, paper  
Size 12 oz



**Paper cup**  
PBS, paper  
Size 16 oz



## OTHER PRODUCTS



Compostable material: PLA



Compostable within 6-12 months in an industrial composting treatment

Direction: Store in cool, dry place, away from direct sunlight



Cold cup  
PLA

Size

12 - 16 - 20 oz



Domed lid  
PLA

Size

9,6 cm



Lunch box  
(PLA)

Size 24 - 28 - 36 oz



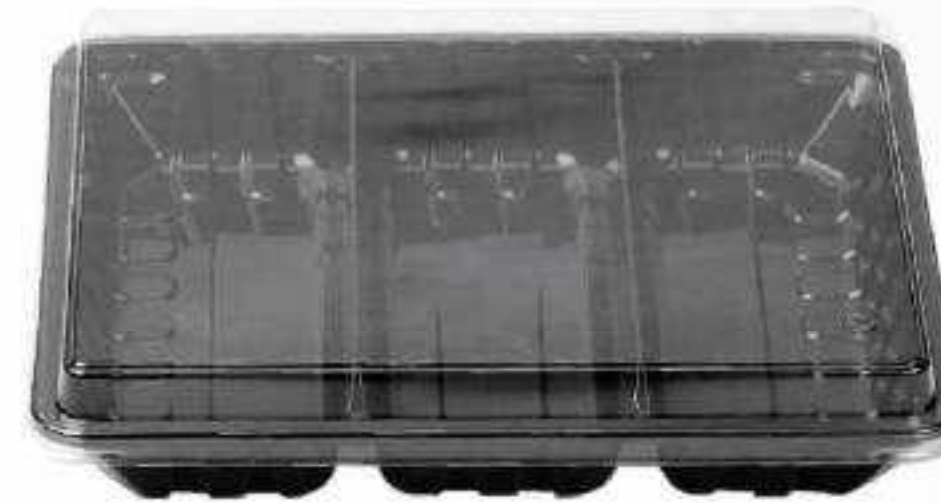
Lunch box  
(PLA)

Size 24 - 28 - 36 oz



Meat container  
(PLA)

Size 32 - 48 - 60 oz



Meat container  
(PLA)

Size 32 - 48 - 60 oz



Bakery container  
(PLA)

Size 24 - 28 - 36 oz



Bakery container  
(PLA)

Size 20 - 22 - 34 oz



Salad container  
(PLA)

Size 2 - 6 - 8 - 10 oz



Salad container  
(PLA)

Size 2 - 6 - 8 - 10 oz

 **Distributed by: ANBIO JOINT STOCK COMPANY**  
(A member of An Phat Holdings)

 **North:**  
Level 12, PV Oil Tower, 148 Hoang Quoc Viet Street, Nghia Tan Ward,  
Cau Giay District, Hanoi

 (84) 2432061199

 **South:**  
41-43 Vo Van Tan Street, Ward 6, District 3,  
Ho Chi Minh City

 (84) 2836363292

 <https://aneco.com.vn/>

 **02432.669.600** (Hotline)

